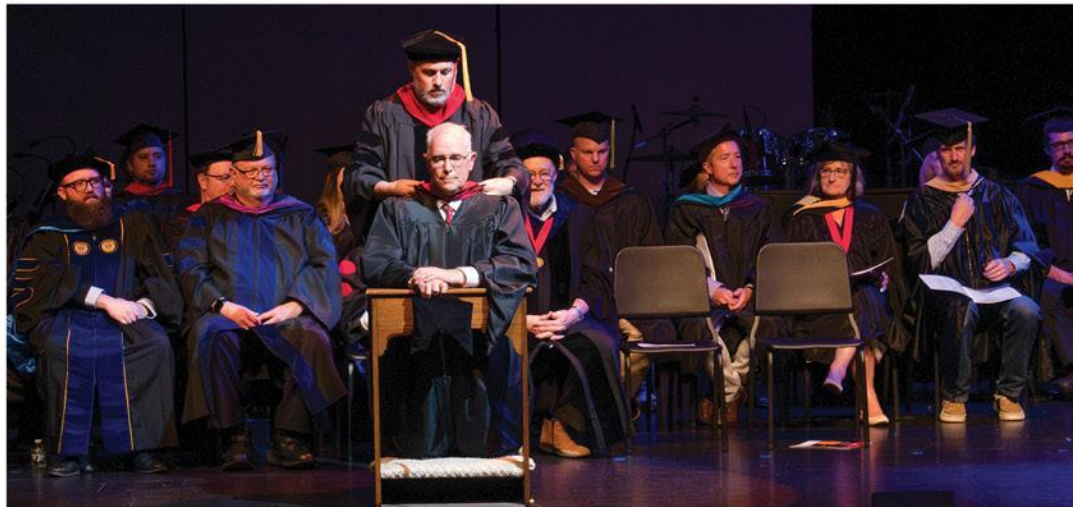


SCHOOL OF
Graduate Studies

2023-2024 Academic Catalog



BARCLAY COLLEGE

SCHOOL of GRADUATE STUDIES

This catalog is intended to fairly represent the School of Graduate Studies programs and policies in effect when this volume was created, edited, or revised. Although every effort has been made to ensure accuracy, information in this catalog is subject to change at the discretion of the Barclay College Trustees, Administration, and Faculty.



Barclay College

607 N Kingman St.
Haviland, KS 67059
Phone: 620-862-0226
Fax: 620-862-5403

Website

barclaycollege.edu

Email

graduatestudies@barclaycollege.edu

Contents

3	INTRODUCING BARCLAY COLLEGE	21	Barclay College Alumni Award
3	Origins and History	21	Graduate Payment Plan
5	Statement of Faith	22	Evaluation, Selection, and Retention
5	God	22	Additional Financial Help
5	Jesus Christ	23	ACADEMIC POLICIES
5	Holy Spirit	23	Academic Standards
5	The Holy Bible	25	Incompletes
6	Humanity	25	Academic Probation
6	Salvation	26	Graduate Program Time Limits
6	The Church	26	Graduation Requirements
7	Christian Work	26	Transcripts
7	Resurrection and Judgment	27	Academic Integrity
8	Missions Statement	27	Library and Other Learning Resources
8	Institutional Goals	28	ACADEMIC OFFERINGS
9	Philosophy of Education	28	Master of Arts in Theology
9	Institutional Outcomes	28	Outcomes
9	Management	32	CONCENTRATIONS
10	Accreditation and Affiliations	32	Pastoral Ministries
11	Veteran Benefits	33	Spiritual Formation
11	State Authorization	34	Transformational Leadership
12	Family Educational Rights and Privacy Act	35	Quaker Studies
13	Inquiries	36	Family Ministries
14	ADMISSIONS AND REGISTRATION	37	Missional Multiplication
14	Admissions	39	Practical Theology
15	Application for Admissions	39	Biblical Translation
15	Admission Standards	40	COURSE DESCRIPTIONS
16	International Admissions Standards	40	Core Requirements
16	Transfer Students	40	Bible and Theology
16	Audit and Non-Degree Enrollment	40	Biblical Translation
17	Concurrent Enrollment	41	Family Ministries
17	3+2 Program	42	Missional Multiplication
17	Registration	43	Pastoral Ministries
17	Withdrawal	44	Practical Theology
18	Community Standards	44	Quaker Studies
19	EXPENSES AND FINANCIAL AID	45	Research and Application
19	Tuition and Fees	45	Spiritual Formation
19	Certificates	46	Theology
19	Refund and Withdrawal Policy	46	Transformational Leadership
20	Administration Initiated Withdrawals	48	GRADUATE SCHOOL ADMINISTRATION
21	Financial Aid	52	ACADEMIC CALENDAR

Introducing Barclay College

ORIGINS AND HISTORY



Barclay College was founded in Haviland, Kansas, in 1917 as the Kansas Central Bible Training School under the leadership of an outstanding Friends teacher and evangelist, Scott T. Clark. Born out of a desire for a strong evangelistic emphasis, the College immediately became a center for the training and preparation of pastors and missionaries.

A Friends academy (1892) had preceded the Bible school, and in 1925 a two-year junior college course was added. The name was changed to Friends Bible College in 1930 to reflect the growing mission of the institution. The academy and junior-college programs served the College well until the 1960s. The purposes of the College and its supporters could best be realized by closing the academy and emphasizing the four-year Bible college program.

Consequently, the academy was laid down in 1968, and the College embarked on a vigorous effort to secure the necessary faculty and facilities for the new program. This effort resulted in widespread support from the community and the college constituency and received general recognition in 1975 with the granting of full accreditation by the American Association of Bible Colleges. (AABC is now the Association for Biblical Higher Education, ABHE.)

The ABHE reaffirmed the College's accreditation in 1985, 1996, and 2006. In the spring of 1990, the College changed its name from Friends Bible College to Barclay College. The new name honors Robert Barclay, the first Quaker theologian.

Today, the College continues to promote the emphasis that gave its beginning -- a warm personal relationship with the living Christ and a firm commitment to the Bible as the final authority for life, faith, and practice. The College closed out the 1990s and entered the twenty-first century with many exciting developments, including a new adult degree completion program begun in 1996, which is now an online program, new majors in the traditional program, a more extensive faculty, new residence halls for men and women, a significant addition to the dining commons,

and the renovation of the existing men's residence hall. Also, they improved technology resources for students and instructors, greatly expanded access to online library resources, and many other improvements to the campus and the College's programs and services which they continually improve on to this day.

The purpose of the College has been the preparation of Christian servant-leaders. Barclay College graduates serve with mission organizations such as Evangelical Friends International, OMS, World Gospel Mission, and Youth Core Ministries. BC graduates also minister in churches in various denominations and provide Christian testimony and influence as educators, counselors, musicians, business people, and other career fields. The College supports and contributes to the need for Christians to impact society through a wide variety of vocations.

Barclay College's School of Graduate Studies has been home to students from many denominations. At present, Evangelical Friends comprise 43% of the total student body. Other denominations represented include Assembly of God, Baptist, Church of Christ, Evangelical Methodist, Free Methodist, Mennonite, United Methodist, and many more. Graduates serve an equally wide range of denominations. Barclay College is committed to the principle that there should not be a division between members of the body of Christ who are committed to excellence in spirit, mind, and labor. The College welcomes all students and supporters whose desire is to bring honor and glory to our Lord and Savior, Jesus Christ.

STATEMENT OF FAITH

God

We believe in one God, revealed through the Holy Bible in the person of Jesus Christ; that He is both the creator and preserver of all things visible and invisible; that He alone is worthy of worship both now and forevermore; and that in the unity of the Godhead there exist three persons, Father, Son, and Holy Spirit, inseparable in divinity, power, glory and eternity.

Jesus Christ

We believe Jesus Christ to be the only-begotten Son of God; that He was conceived by the Holy Spirit and born of the virgin Mary; that He is the express image of the invisible God; and that He combines within Himself both the nature of God and the nature of man in one perfect and indivisible personality; fully God and fully man.

We believe that He was crucified as an atonement for the sins of the whole world, making provision whereby humanity could find the forgiveness of sins and the power for a new life and be brought back into a perfect relationship with the Father.

We believe that He arose from the dead and then ascended to the right hand of God. He is now making intercession for us and will come to earth again to receive His Church unto Himself and judge the world in righteousness.

Holy Spirit

We believe the Holy Spirit to be the third person of the Godhead, proceeding from both Father and Son but equal with them in authority, power, and glory. He convicts the world of sin, imparts life to the penitent believer, sanctifies the child of God, and enables one by His indwelling presence to love God supremely.

The Holy Bible

We believe that the Holy Scriptures were given by the inspiration of God; that there can be no appeal from them to any other authority whatsoever; that they are fully sufficient to make one wise unto salvation through faith that is in Jesus Christ; that the Holy Spirit who inspired the Scripture must ever be its true interpreter as He works through the disciplined and dedicated minds of those within His Church; that any professed guidance that is contrary to these Scriptures must be counted as a delusion.

Humanity

We believe that God created humans in His own image, that they enjoyed unbroken fellowship with their Maker, and that their whole life was centered in the person of God. We believe that humans fell from this original state by an act of transgression; that in this fall, they suffered the immediate loss of their perfect relationship with God, making themselves the center of life. In this act, they suffered immediate spiritual death. All people are born into this disposition to sin. We own no principle inherent naturally in people by which they may be saved, except by the grace of our Lord Jesus Christ as a provision for all humanity.

Salvation

We believe that by the grace of our Lord Jesus Christ and by the direct and immediate agency of the Holy Spirit, a person may be recovered from the fallen state through divine enlightenment, the forgiveness of sin, regeneration, and sanctification of affections, and the final glorification of the body; that in this life a person may love God with all one's heart, soul, mind, and strength; that one may live in victory over sin and enjoy unbroken fellowship with the Father; and that once more one's whole life may center in and revolve around one's Creator and Father.

We believe sanctification to be both a crisis and a process. As a crisis, sanctification is accomplished by the baptism with the Holy Spirit in the life of a dedicated and believing child of God in which the heart is cleansed from an imperfect relationship and state. As a process, sanctification continuously disciplines life into paths of holiness. We believe that baptism with the Holy Spirit (entire sanctification) is the work of God's grace by which the affections of people are purified and exalted to a supreme love of God, and the believer is empowered to witness to the living Christ.

We believe that, by the grace and power of God, through faith in the crucified Christ, the believer is assured of eternal life with the Triune God and that no power on earth or in heaven can sever that relationship against the will of the believer. We believe, however, that by willful choice, a child of God can return to that sinful state from which he or she had been lifted. Such apostasy destroys his fellowship with God and the eternal life with which he had been endued so that for him remains only the eternal death of the unbeliever. However, such is the grace of God that, so long as life in the body remains, the prodigal may return to "the Father's house" through repentance, confession, and renewed faith and be fully restored to eternal life and fellowship with Him.

The Church

We believe that all those who repent of their sins and believe in Jesus Christ as their Savior are born again into His kingdom by the Holy Spirit. These persons make up the Church universal of Jesus Christ. This Church we believe to be spiritual in nature, universal in scope, holy in character, and redemptive in her life and purpose.

We believe that wherever two or three are gathered together in the name of Christ, God is truly present in the person of the Holy Spirit and that such an assembly is a local church, the visible expression of His body, and the Church universal.

We believe that every believer should be attached to the local and visible body of Christ, being fitly framed together with others into a holy temple in the Lord and built for a habitation of His Spirit.

Christian Work

We believe that in the Church, the believer is committed to both the worship and the work of God. This work involves personal righteousness as the fruit of a new life and the ministry of evangelism and teaching. The commission of Christ for every believer consists of the stewardship of the kingdom, which is fulfilled only by faithful service in and through the fellowship of His Church. This work is continuous until Christ comes again, calling the Church unto Himself. We believe that all Christians are called upon to witness by word and deed within a sinful world, not returning evil for evil but, like Christ, demonstrating love, forgiveness, and the way of peace.

We believe that in the fellowship of His body, the Holy Spirit gives to every member gifts of ministry to be exercised for the mutual advantage of every other member in the body and the influence of the Church upon the world. A ministry is a gift given to those God calls and ordains for leadership in His Church.

Resurrection and Judgment

We believe in the second coming of Christ: that at His coming, the dead shall be resurrected, some to everlasting glory and others to eternal punishment; that we shall all stand before the judgment seat of Christ to receive recompense for the things done in the flesh. The judgment of the blessed shall be life everlasting in heaven, and the judgment of the lost life everlasting in hell. Judgment is in the hands of our compassionate Redeemer, who does all things after the counsel of His wisdom, love, and holiness.

MISSION STATEMENT

Barclay College prepares students in a Bible-centered environment for effective Christian life, service, and leadership.

To accomplish this mission, Barclay College has been established as a Christian institution of higher education that challenges students to explore, understand, and acquire the skills necessary to respond to the call of God upon their lives.

INSTITUTIONAL GOALS

Two primary goals guide the development and practices of Barclay College's educational and ancillary programs. As noted below, both goals are reflected in the College's mission statement elements.

"Preparing students in a Bible-centered environment" indicates that the primary undertaking of the College is education with an integrated biblical perspective. Barclay College strives for academic and spiritual excellence by providing an environment that encourages higher levels of inquiry and learning. Bible instruction, the integration of biblical principles across the curriculum, general education, and professional preparation are emphasized to ensure that the College accomplishes the first primary goal: **assisting each student in developing a Christian worldview and a collegiate level of knowledge appropriate to college graduates generally and to their chosen field specifically.**

"Effective Christian life, service, and leadership" means that Barclay College views its mission as broader than simple preparation for a career or helping students acquire knowledge. Rather, the College desires to assist students in knowing God and, from that relationship, construct meaning and understanding that will inform all of life's endeavors. The second major goal of the College, then, is **graduating men and women who can be generally characterized as biblically literate, prayerful, mission-minded, servant-oriented, evangelical Christians who are able to provide leadership to the church at large and in various professional fields.**

PHILOSOPHY OF EDUCATION

The College believes that true education must begin with God and His direct revelation to humanity through the Bible, understanding that all that has proceeded from God gives meaning and coherence to all other inquiries. Education, then, is a process directed by God in which the individual acquires knowledge or skills that contribute toward a greater understanding of, and ability to accomplish, the purposes of God for the individual and humanity generally. We believe that effective education contributes to all areas of the individual's life, giving the educated person an increased ability to live a life that is orderly, peaceful, purposeful, productive, and in harmony with God. Education should reveal to the student that God's involvement with humanity and physical creation is comprehensive and personal. The formation of this coherent Christian worldview produces individuals who are increasingly characterized by a Christ-like love for all people and a desire to be involved as a steward in work that contributes to the management and care of the physical creation and the physical and spiritual welfare of humanity.

INSTITUTIONAL OUTCOMES

In keeping with Barclay College's mission statement, goals, and philosophy of education, specific outcomes are expected, which provide both a framework for the design and evaluation of the College's programs and practices and a basis for assessing student progress. Upon graduation from Barclay College, our graduates should be able to:

1. Exhibit immersion in the Father, Son, and Holy Spirit
2. Model the life and teachings of Jesus Christ
3. Discern their ministry calling within and outside their culture
4. Articulate the distinct path of Friends
5. Interpret and apply Scripture
6. Critically evaluate diverse perspectives
7. Form and answer questions to advance knowledge
8. Communicate effectively in written and oral forms
9. Team with others to accomplish goals

MANAGEMENT

The Board of Trustees exercises full control and authority over Barclay College, Inc., as amended in 2013 and originally incorporated under the laws of the State of Kansas in 1917.

Officers of the Board of Trustees are the Chairman, Vice-Chairman, Secretary, President of the College, and such other officers as may become necessary. With the addition of the chairman of each standing committee, these officers constitute the Executive Committee of the Board of Trustees.

ACCREDITATION AND AFFILIATIONS

Barclay College is accredited by the Association for Biblical Higher Education (ABHE), a national accrediting agency recognized by the U.S. Department of Education and the Council for Higher Education Accreditation (CHEA). ABHE may be contacted by writing to the Association for Biblical Higher Education; 5850 T.G. Lee Blvd., Ste. 130; Orlando, FL 32822; by calling (407) 207-0808; or through their website at www.abhe.org.

Barclay College is accredited by the Higher Learning Commission (HLC), a regional accrediting agency recognized by the US Department of Education and the Council for Higher Education Accreditation (CHEA). HLC may be contacted by writing to HLC; 230 S. La Salle St., Ste. 7-500; Chicago, IL 60604; by calling (800) 621-7440; by email at info@hlcommission.org; or through their website at www.hlcommission.org.

Barclay College graduates have found acceptance into leading seminaries and graduate schools. The documents describing the College's accreditation and licensing may be viewed in the Business Office, where they are on display. Those desiring further information regarding the accreditation of the College should contact the Vice President for Academic Services at (620) 862-5252 or visit the Accreditation page on the College's website: <http://www.barclaycollege.edu/about/accreditation/>.

Veteran Benefits

Barclay College works with the U.S. Department of Veteran Affairs to provide funding for education. Students who have served in the armed forces or are relatives may be eligible for financial assistance through the GI Bill.

Students need to contact our School Certifying Officer (SCO) to work through the following details.

- Veterans may apply for educational benefits at benefits.va.gov/gibill
- The VA determines eligibility and sends the student a Certificate of Eligibility (COE).
- Veteran provides a copy of the COE to the SCO at Barclay.
- SCO in conjunction with the Registrar, advisor, and Business Office certifies enrollment, tuition, and fees through VA ONCE
- VA makes payments to the school on behalf of the student.

Barclay College recognizes the Veterans Benefits and Transition Act of 2018 and, in accordance with Section 103, assures that all students eligible for VA Educational Benefits will not incur any penalty, including the assessment of late fees, the denial of access to classes, libraries or other institutional facilities or the requirement that a Chapter 31 or Chapter 33 recipient borrow additional funds to cover the individual's inability to meet his or her financial obligations due to the delayed disbursement of payment by the U.S. Department of Veterans Affairs.

State Authorization

States require that Barclay College be authorized to deliver postsecondary distance education to its residents. Admission of applicants residing outside the state of Kansas is dependent upon BC's ability to secure such authorization from the applicant's state of residence. Barclay College operates in Kansas under the State Authorization Reciprocity Agreement (SARA) policies to comply with these standards. This is a voluntary, regional approach to state oversight of postsecondary distance education, aimed at making an effort to obtain state authorizations more efficient for the institutions. Any questions regarding state authorization should be sent to the Vice President of Academics.

Contact Information for Filing Complaints All state authorization complaints will be made initially to the Barclay College VP of Academics. Issues not resolved at the institutional level may be directed to the institution's home state SARA portal agency against which the complaint has been logged. The portal agency for institutions based in Kansas is the Kansas Board of Regents. Students with issues regarding approved Kansas institutions must follow the complaint procedure (https://www.kansasregents.org/resources/PDF/Academic_Affairs/3257-ComplaintForm_SARAINstitutions.pdf) as outlined.

FAMILY EDUCATIONAL RIGHTS AND PRIVACY ACT

Barclay College protects the rights of students as stipulated in the Family Educational Rights and Privacy Act of 1974 (FERPA). This Act gives college students the right to inspect, review, and challenge the content of their educational records and prohibits the release of academic records without the student's prior written consent except in specific circumstances.

The following categories of personally identifiable information have been designated as public. They are a matter of directory to be shared with the College community and with the general public as needed: name, local and permanent address, campus email address, phone number, date and place of birth, marital status, state and county of residence, home church, class, major field of study, dates of attendance, degrees and awards (including scholarships) received, participation in officially recognized activities and sports, and weight and height of members of an athletic team.

Students currently enrolled may withhold disclosure of information in any category by requesting this in writing at the Academic Office. Written requests for non-disclosures will be honored for a maximum of one year. Barclay College assumes that failure to complete the request indicates approval for disclosure.

Grade point averages, course grades, and probation records will be released only to the student and appropriate administration and faculty members as needed as part of a College program. Transcripts require the student's signature before they can be released. The annual Barclay College Student Handbook outlines more detailed information concerning access to records and procedures for students to follow

INQUIRIES

This publication supplements the complete Barclay College Catalog and is designed especially for the Barclay College School of Graduate Studies. More details of the traditional college program and the College itself can be found in the Academic Catalog. If you have questions related to Barclay College programs or policies, please direct them as follows:

All individuals can be reached through email or by calling the Barclay Administrative offices during regular business hours at 1.800.862.0226

Questions about:	Contact:	Info:
Academic issues: Advising, Classes, CLEP exams, registration, schedules, graduation, grades, GPAs, transcripts, majors. Independent Study Classes	Aaron Stokes, Registrar	aaron.stokes@barclaycollege.edu
Academic policy or curriculum	David Mabry, D.Min, Dean, School of Graduate Studies	david.mabry@barclaycollege.edu
Canvas assistance	Angie Wetmore, Dean, School of Distance Education	angie.wetmore@barclaycollege.edu
Student Services	Ryan Haase, VP for Student Services	ryan.haase@barclaycollege.edu
Computer help, Internet services	Barry Anders, Network Administrator	barry.anders@barclaycollege.edu

Finances, student accounts, charges, making changes to payment plans	Tiffany DiBlasi, Business Office	tiffany.diblas@barclaycollege.edu
Financial aid	In lieu of Financial Aid Director, contact Tiffany DiBlasi	tiffany.diblas@barclaycollege.edu
Library/Reference help, to check out books via mail	Jeannie Ross, Librarian	jeannie.ross@barclaycollege.edu

Admissions and Registration



Admissions

The Barclay College School of Graduate Studies exists to prepare students to be effective Christians. Our admissions standards and qualifications give attention to prospective students' academic potential and their Christian spiritual commitment. Barclay College actively recruits all students who want to acquire their graduate education in a decidedly Christian, Bible-centered educational climate and is committed to preparing students for effective Christian service.

Application for Admissions

Interested students are invited to contact the Barclay College Graduate Admissions by phone, email, mail, or website to request information or apply online from the college website.

Toll-Free Call:

1-800-862-0226

Electronic Contact:

graduatestudies@barclaycollege.edu

www.barclaycollege.edu

Conventional Mail:

Graduate Admissions Office Barclay College

607 N. Kingman

Haviland, Kansas 67059

Barclay College operates on a rolling admissions basis. As soon as all of your materials are received, you will be contacted to coordinate a personal interview. A decision will then be made on your admission, and you will be notified of your status. Students can enter the MA program in either the Fall or the Spring semester.

Admission Standards

Applicants must satisfy the following requirements in order to be accepted into the School of Graduate Studies at Barclay College.

- Completion of the Barclay College Graduate Application Form

- Completion of a regionally or nationally accredited Bachelor's and/or Master's degree with a minimum cumulative GPA of 2.5 on a 4.0 scale
- Submission of official college transcripts (electronically from an official clearinghouse and/or awarding institution)
- Submission of three references: one academic (course instructor), one professional (co-worker or supervisor), and one personal (friend or acquaintance)
- Submission of a professional resume.'
- Submission of a writing sample of 8 to 12 pages in length
- Interview with the concentration director

International Admissions Standards

International Applicants must satisfy the following requirements in order to be accepted into the School of Graduate Studies at Barclay College.

- Completion of the Barclay College International Graduate Application Form
- Completion of a Bachelor's and/or Master's degree with a minimum cumulative GPA of 2.5 on a 4.0 scale (or the equivalent on a different scale).
- Submission of official college transcripts
- Submission of two references: one academic (course instructor) and one personal (friend or acquaintance)
- Submission of a writing sample 4 pages in length.
- Interview with the concentration director.

Transfer Students

The Master of Arts program is distinctively designed as a modular and integrated unity. Every class in the program is deemed important. However, transfer of credit for graduate coursework completed elsewhere will be accepted on a case-by-case basis up to a maximum of nine credit hours. Typically, transfer credit is more easily accepted for Core Theology/Bible classes than for concentration classes. Transfer credits will not be accepted for Research classes.

Audit and Non-Degree Enrollment

Barclay College does not allow students to "audit" classes in the graduate program. All classes are offered for credit only, requiring all students to pay full tuition and fees and participate fully in class, receiving a letter grade for their efforts.

The Master of Arts program draws students from various ages and stages in ministry contexts and life circumstances. As a result, some individuals may desire to take a few graduate classes without matriculating into the degree program or a concentration for personal enrichment, weigh the rigor of academics with their ministry demands, or transfer certain courses into other graduate programs. An individual who successfully completes the admission as mentioned

earlier requirements for the School of Graduate Studies at Barclay College may petition to enroll as a non-degree student for up to twelve credit hours in Core Theology/Bible or Concentration classes. Non-degree students may not enroll in the Research classes. As with all other graduate classes at Barclay College, classes taken under this arrangement will be offered for credit only. A non-degree student must pay full tuition and fees, participate fully in class, and receive a letter grade. Suppose a non-degree student desires to enroll in the Master of Arts program. In that case, they will need to submit a request in writing to the Dean of the School of Graduate Studies and the Director of their desired Concentration of study for approval.

Concurrent Enrollment

Although rare, students may be permitted to take graduate-level coursework while completing their undergraduate degree at Barclay College. To be eligible, a student must demonstrate exceptional academic ability with a maximum of twelve credit hours left to complete their undergraduate degree and sufficient margin in their life to fulfill the demands required for such an endeavor. Concurrent enrollment is only allowable for one semester, not to exceed nine credit hours of graduate study while completing undergraduate courses. Students must complete their Bachelor's degree before the start of their second semester of graduate enrollment. Request for concurrent enrollment must be made in writing to the Dean of the School of Graduate Studies, Vice President for Academics and the Registrar.

3+2 Program

The 3+2 Program is a concurrent enrollment program designed to allow qualified undergraduate students to graduate-level coursework in an attempt to achieve both their Bachelor's and Master's degree at the same time. To be eligible, a student must demonstrate exceptional academic ability, maintaining a minimum 3.0 GPA, plus have recommendations from their undergraduate advisors and an interview with the program director for the concentration they are applying to. Students will graduate with their Bachelor's after their fourth year of classes and their Master's in their fifth year of classes. Freshmen may be admitted on a probationary status for the 3+2 program, with full admittance into the program dependent on how well they complete their first year of undergraduate courses.

Registration

Registration and enrollment are conducted online on scheduled days at the beginning of each semester. Registration is not complete until tuition and fees have been paid.

Withdrawal

Students who have reason to withdraw from a class or program of study should contact the Registrar to discuss their situation and request the required withdrawal forms. Refunds and transcript entries will be calculated from the last date of class attended.

Community Standards

At Barclay College, we seek earnestly for that quality of life that manifests the fruit of the Spirit: "love, joy, peace, patience, kindness, goodness, faithfulness, gentleness, and self-control. Against such things there is no law." (Galatians 5:22-23 NIV) Any community that agrees to live together in Christian love must provide a framework of rules that outline the purposes and practices that it finds acceptable or unacceptable.

Dishonesty, disrespect for other college community members, or consistently inconsiderate behavior of others is unacceptable. Cheating in any form is considered a serious offense at Barclay College. Academic dishonesty is inconsistent with a Christian testimony and may be adequate cause for immediate suspension or dismissal from the College.

Barclay College is a private institution, and association with the College is a privilege and not the right of any college community member. Members of the online community are also expected to comply with local, state and federal statutes, including, but not limited to, respect for copyright and discrimination or harassment laws. Violations of standards relating to college policy are handled through the Dean of Graduate Studies office. They may result in various forms of punitive measures, including suspension or dismissal from the College. Violations of civil law are referred to local law enforcement authorities.

Expenses and Financial Aid

Tuition and Fees: 2022-2023

MAPM, MATL, MAFM, MAQS, MAMM, and MASO

	<u>Semester:</u>	<u>Total Program:</u>
Tuition: \$440 per credit hour	(x 9 hours) = \$3,960	(x 36 hours) = \$15,840
Fees: \$100 per class	\$300	x 12 = \$1,200
TOTAL:	\$4,260	\$17,040

Note: These figures do not include variable expenses, such as travel, books, and supplies. The College reserves the right to adjust tuition and fee schedules from year to year as necessary.

Certificates

Certificate courses will be charged at the standard tuition and fee rate, except for those who have earned a Barclay College MA, which will receive a 50% tuition discount.

Refund and Withdrawal Policy

The College maintains a refund and withdrawal policy in accordance with Department of Education guidelines as outlined below:

REFUND POLICY: Student-Initiated Withdrawals

Students who request a withdrawal on or after the 15th day of an online class will be charged full tuition and fees for that class. Tuition and fees will be refunded only for withdrawals on or before the 14th day of a class, with a withdrawal fee assessed as follows:

1st Withdrawal	No fee
2nd and 3rd withdrawals	\$50 each
4th withdrawal	\$100 fee and student's financial and academic standing sent to online committee for review

Table 3

This fee schedule will reset with each new semester unless an individual's withdrawal patterns warrant further review. For example, a student with two or three withdrawals in two or more subsequent semesters may be considered for review by the online committee.

Administration Initiated Withdrawals

The College reserves the right to withdraw students who fail to meet financial or academic obligations or disrupt the educational process because of misconduct.

Students will be withdrawn for non-participation after the first week of any class. Participation is determined within the online learning environment by posting on a discussion board within the first week of the course. Both the faculty member and the online administration will make a good faith effort to contact students before withdrawing them.

Students who are withdrawn from an online class for failure to participate in the first week of class will be charged a \$100 fee.

To be eligible for any refund, students must contact their advisor and complete the official withdrawal forms located on the website. Refunds will be calculated based on the last day of class attendance.

The total refunds for withdrawing students will never exceed the total amounts charged for the term. Any financial aid refund will be mailed to the student's home address. Credit balances resulting from anything except for withdrawal from the College will be retained on the account or refunded at the student's request.

Students suspended or dismissed from the College for academic or disciplinary reasons will receive a refund (per above) and not be charged an administrative charge.

Financial Aid

The Barclay College School of Graduate Studies works with each student to provide practical solutions for tuition costs. To ensure the highest quality of education at the most affordable price, Barclay College goes to great efforts to offer answers to the financial needs of graduate students.

Competitive and Affordable: Barclay College School of Graduate Studies monitors the tuition of graduate programs around the country to ensure its graduate programs are affordable. Our commitment to our students is that we will be an affordable private Christian institution while delivering the highest level of academic rigor to ensure the student's future success.

Scholarships, Awards, and Payments Plans: Barclay College offers several institutionally-supported programs to assist students with tuition costs. Applicants must be enrolled full-time in the MA program leading to a graduate degree in each case. Qualified applicants will only receive one institutional award per semester in relation to scholarships and grants. Still, it will always be the one that is the largest that they are eligible to receive.

Barclay College Alumni Award

All Bachelor's degree recipients from Barclay College are qualified to receive the Barclay College Alumni Award that will pay 100% of the tuition for their first three Bible/Theology classes in the MA program! These classes occur once each semester in the first three semesters of enrollment. This award equals $\frac{1}{4}$ of the entire tuition costs for the Master's degree. In order to receive this award, a student must complete the whole semester in which they hope to receive the free class.

Graduate Payment Plan

The Payment Plan is offered to students who need additional assistance with tuition costs. This assistance program is ideally suited for students who currently have a regular income but need help with cash flow. An affordable payment plan with a minimal administrative fee is arranged with each student. There are two payment plans for the Fall and Spring semesters:

1. **Semester Payment Plan:** The entire balance due is paid on or before the first day of the semester.
2. **Monthly Payment Plan:** A monthly payment plan is available. Information detailing the monthly payment plan is available through the college business office.

All bills must be paid in full before a student can register for the next semester or session. Contact Tiffany DiBlasi in the business office for more information at tiffany.dibiasi@barclaycollege.edu or call 800-862-0226.

EVALUATION, SELECTION, AND RETENTION: To receive the aforementioned institutional financial aid from Barclay College, the following conditions must be met:

- Applicants must be accepted and enrolled full-time in the MA program leading to a graduate degree.
- Students must maintain their full-time enrollment status and a 3.0 graduate GPA.
- Students should apply for institutional financial aid online at <http://barclaycollege.edu/forms/graduate-scholarship.html> or by contacting Tiffany DiBlasi, the Director of Graduate Admissions, at tiffany.diblasib@barclaycollege.edu or 800-862-0226.
- Students only need to apply at the time of their initial enrollment, but any applicable awards will be granted in future semesters. If, for some reason, a student believes they are eligible for an award that they have not yet received, they should contact the Financial Aid Director.
- A student will only receive ONE institutional award in a given semester. It will always be the most favorable financial award that they are eligible to receive.
- Successful selection will be confirmed by an award letter. Students will be notified if they will no longer be eligible for their award(s)

Additional Financial Help

FAFSA – Free Application for Federal Student Aid: Students interested in financial aid should complete a Free Application for Federal Student Aid (FAFSA) to determine what they are eligible to receive in unsubsidized loans. Students can fill out their FAFSA online at <https://fafsa.ed.gov/>. Barclay College's school code is 001917.

Additional funding sources may also be available through local churches, denominations, and other Christian organizations. Students are encouraged to explore all possibilities.

QUESTIONS?

If you have any questions about financial aid, please email or call our Director of Graduate Admissions, in lieu of the Director of Financial Aid, contact Tiffany DiBlasi: tiffany.diblasib@barclaycollege.edu, 800-862-0226. If you have any questions about payment plans for our graduate programs, please email or call our Director of Graduate Admissions in lieu of our Student Accounts Receivable Specialist, Tiffany DiBlasi: tiffany.diblasib@barclaycollege.edu or call 800-862-0226.

Academic Policies

Academic Standards

Academic credit is awarded for classes completed with a C or higher passing grade. To be in good standing, a student must maintain the required grade point average (GPA) of 3.0. Grades will be recorded on the student's permanent record in the following manner:

A=Superior	4.0 points
A-	3.7 points
B+	3.3 points
B=Good	3.0 points
B-	2.7 points
C+	2.3 points
C=Adequate	2.0 points
F=Inadequate	0 points
W=Withdrawal	0 points
I=Incomplete	0 points

The grade-point average (GPA) is computed by dividing the total number of grade points earned by the number of hours taken.

Definition of Grades: The meaning of the various grades assigned at Barclay College is outlined below:

A grade of **A** represents:

- Superior understanding of course material evidenced by almost no errors in fact, and the ability to analyze that material critically, synthesize creatively and evaluate carefully.
- Complete sound techniques of scholarship in all projects

- Creativity, imagination, and intellectual curiosity in relating the course material to other courses and thoughts. Clear, effective ability to communicate concepts, implications, analysis, synthesis, and evaluation from the course to other students and faculty.
- Evaluative ability that specifically includes sound judgment grounded in biblical principles and precepts.

A grade of **B** represents:

- Good understanding of course material evidenced by very few errors in fact, and the ability to state generalizations and implications from the material learned
- Understanding of and consistent application of techniques of scholarship in all projects
- The ability to communicate concepts and implications from the course to other students and faculty
- Evidence of increasingly sophisticated ability to evaluate the course material from a biblical perspective.

A grade of **C** represents:

- Adequate understanding of course material demonstrated by few errors in fact or internal connections when discussing or testing on course material.
- Adequate competence in techniques of scholarship: reasonable logic, consistent effort to document sources, reasonably clear writing, etc.
- Satisfaction with the minimum standards for the course in terms of reading, preparation, and class participation (The student can articulate several main themes from the course material)

- Evidence of ability to evaluate the broad themes of the class in light of general biblical concepts.

A grade of **F** represents:

- Inadequate understanding of course material demonstrated by frequent errors in fact or internal connections when discussing or testing on course material
- Inability to use sound techniques of scholarship: plagiarism (accidental or intentional), irrational or fatally flawed logic, inability to communicate in writing, etc.
- Failure to meet the course standards means that the student cannot articulate major themes and concepts. There is minimal or no evidence of increased or changed knowledge, skills, attitudes, or behavior.
- Inability to connect biblical principles to course material

Failing: An "F" will be received by a student who has failed to achieve the course objectives satisfactorily. **The second grade of "F" is grounds for dismissal from the program.**

Incompletes

Incomplete grades must be removed within one calendar month, counting from the last day of the semester in which they were given. Incompletes not completed within the month automatically become failing grades (F).

Academic Probation

A student with regular admission status will be placed on academic probation at the end of any semester that their cumulative graduate GPA falls below 3.0. A student is automatically removed from probation at the conclusion of any semester their cumulative GPA meets or exceeds the required GPA of 3.0 required for graduate study. Students on academic probation are reviewed at the conclusion of each semester regarding their progress toward meeting the required cumulative GPA of 3.0. Any student who is not making satisfactory progress toward achieving the required minimum GPA of 3.0 will be dismissed from the program.

Graduate Program Time Limits

Work for the Master's degree must be completed within five (5) calendar years of the first registration as a graduate student at Barclay College.

Graduation Requirements

Each student must formally apply for graduation during spring registration in his/her final year. The responsibility of fulfilling all requirements for graduation belongs to the student, although the Director of Graduate Studies and other college personnel are available for counsel.

To qualify for graduation, a student must meet the following requirements:

1. Complete the approved program of study with a minimum cumulative GPA of 3.0.
2. Settle one's financial obligations to the College.
3. Demonstrate a maturing Christian life, as assessed by the faculty. A maturing Christian life reflects Scriptural standards of ethical integrity in personal and professional spheres. This is characterized by honest, respectful, and caring relationships and responsible conduct in all areas of life.

All requirements noted above must be met before students are issued a diploma. Generally, students must also meet all requirements for graduation before being permitted to participate in commencement exercises. However, students who will complete their studies shortly after the commencement exercises or have no more than three credit hours left to complete their degree may petition to participate in the ceremony. **Students who wish to petition must submit the request in writing to the Office of Graduate Studies at least six weeks prior to the expected graduation date.**

Transcripts

Students who desire a transcript of their graduate work should submit a written request to the Registrar. One copy of the transcript is furnished to the student without charge upon the first request. Each additional copy requested after that costs five dollars (\$5.00). The fee should accompany the request. A transcript will not be issued to or for a student indebted to the College.

Requests for transcripts must be made in writing and include the student's signature, the required fee, the years of attendance at Barclay College, social security number, and if married after graduation, the maiden name.

Academic Integrity

As spiritual leaders within the body of Christ, all members of the Barclay College community are expected to embrace the highest standards of personal integrity (cf. 1 Timothy 3:1-11).

Academic integrity calls for the consistent demonstration of honorable behavior in all academic endeavors.

When one person knowingly uses another person's ideas and represents them as his or her own without giving credit to that person, this represents a clear breach of academic integrity known as plagiarism. The source must be cited whenever another person's idea (either indirectly or by direct quote) is used in an assignment. Failure to do so will result in a failing grade for the assignment. A second offense will constitute grounds for dismissal from the College.

Library and Other Learning Resources

Barclay College offers a full-service library program to all of the College's students and employees. Worden Memorial Library contains approximately 63,000 volumes and 174 periodical subscriptions that support Barclay's curriculum.

In addition, Worden Memorial Library provides many Internet services to students and has access to the Kansas Library catalog, which contains the holdings of most of the libraries in Kansas. Through the Kansas State Library and the state's regent's universities, Barclay students access OCLC's Firstsearch online database, Gale Group's InfoTrac database, EBSCOHost, Encyclopedia Britannica online, and World Book Encyclopedia online. These links provide Barclay College students with access to over one million full-text or abstracted titles.

Full print and CD-ROM reference work and Bible software are also available to library patrons. Other individualized CD-ROM products that support specific courses are also available.

Worden Memorial Library offers bibliographic instruction and research assistance to all patrons. The library is accessible from the Internet at www.barclaycollege.edu/Academics/library.asp and offers quality links to online sites that will assist Barclay students with their research.

Academic Offerings

Master of Arts in Theology

The School of Graduate Studies at Barclay College offers students a transformative learning experience through excellence in academics and relevant application to life, service, and leadership today. The Master of Arts degree is a 36 credit-hour program (42 credit hours for the Practical Theology concentration) built on a concentration model of study. Students will complete four nine-hour semesters of study involving three consecutive courses each semester. Recognizing that not everyone is called to serve in the same way, the Master of Arts degree program offers an interdisciplinary model of graduate education, featuring a combination of core theology and biblical studies courses, relevant research and/or field experiences, and unique concentration foci.

Outcomes

At the completion of this program of study, the student shall:

1. Understand, evaluate, and synthesize various historical, biblical, and theological concepts.
2. Understand, evaluate, and synthesize theoretical concepts associated with their concentration field of study.
3. Produce an academically rigorous literature review and applied research.
4. Demonstrate a scholarly and professional tone in academic writing, dialogue, and communication.

Degree Course Requirements (except MAPT and MABT)

	Course Number	Course Name	Credit Hours
Bible & Theology			
	MABI511	Old Testament Hermeneutics	3
	MABI521	New Testament Hermeneutics	3
	MATH531	Christian Theology	3
	MATH541	History of Christianity	3
	MAMM531	The Missional Church	3
		Subtotal	15
Research & Application			
	MARA523	Research Methods	3
	MARA533	Applied Research I	3
	MARA543	Applied Research II	3
		Subtotal	9
Concentration Courses			

Pastoral Ministries			
	MAPM512	The Personal Life of the Pastor	3
	MAPM522	Preaching and Worship	3
	MAPM532	Pastoral Care and Counseling	3
	MAPM542	Church Leadership & Administration	3
		Subtotal	12
Spiritual Formation			
	MASF512	Spiritual Formation in Biblical Perspective	3
	MASF522	Spiritual Formation and the Transformational Journey	3
	MASF532	Christian Classics: Ancient Wisdom for Modern Work	3
	MASF542	Soul Shepherding: The Role of the Christian Leader in the Development of Others' Souls	3
		Subtotal	12
Transformational Leadership			
	MATL512	Transformational Leadership Theory	3
	MATL522	Theological Perspectives on Transformational Leadership Theory	3
	MATL532	Transformational Leadership and Organizational Health	3
	MATL552	Professional Application of Transformational Leadership Theory	3
		Subtotal	12
Quaker Studies			
	MAQS512	Quaker History: Birth, Growth, and Organization	3
	MAQS522	Quaker Beliefs	3
	MAQS532	Quaker Classics	3
	MAQS542	Quaker Missions	3
		Subtotal	12
Family Ministry			
	MAFM512	Ministry of Self	3
	MAFM522	Ministry of Marriage	3
	MAFM532	Ministry of Family	3
	MAFM542	Ministry of Community	3
		Subtotal	12
Missional Multiplication			
	MAMM512	Church Multiplication	3
	MAMM522	Cross-Cultural Ministry in Local Perspective	3
	MAMM532	Cross-Cultural Ministry in Global Perspective	3
	MAMM542	Quaker Missions	3

		Subtotal	12
MA Program Summary		Bible & Theology	15
		Research & Application	9
		Concentration Courses	12
		Total	36

Degree Course Requirements - Biblical Translation concentration

	Course Number	Course Name	Credit Hours
Bible & Theology			
	MABI511	Old Testament Hermeneutics	3
	MABI521	New Testament Hermeneutics	3
	MATH531	Christian Theology	3
	MATH541	History of Christianity	3
	MAMM531	The Missional Church	3
		Subtotal	15
Research & Application			
	MARA523	Research Methods	3
	MARA535	Applied Research - Practicum	5
	MARA543	Applied Research II	3
		Subtotal	9
Concentration Courses			
Biblical Translations			
	MABT512	Oral, Sign Language & Special Needs Translation	3
	MABT522	History of Biblical Translation and the Reformation	3
	MABT532	MAST Methodology	3
	MABT542	Translation Tools and Technology	3
		Subtotal	12
MA Program Summary		Bible & Theology	15
		Research & Application	9
		Concentration Courses	12
		Total	36

Degree Course Requirements - Practical Theology concentration

	Course Number	Course Name	Credit Hours
Bible & Theology			
	MABI511	Old Testament Hermeneutics	3
	MABI521	New Testament Hermeneutics	3
	MATH531	Christian Theology	3

	MATH541	History of Christianity	3
	MAMM531	The Missional Church	3
		Subtotal	15
Research & Application			
	MARA523	Research Methods	3
	MARA533	Applied Research I	3
	MARA543	Applied Research II	3
		Subtotal	9
Concentration Courses			
Practical Theology			
		Six Concentration Courses (Any concentration)	18
		Subtotal	12
MA Program Summary		Bible & Theology	15
		Research & Application	9
		Concentration Courses	18
		Total	42

Concentrations

Pastoral Ministry

The Pastoral Ministry concentration combines the study of theology and the Bible with proven principles and best practices for effectiveness in pastoral ministry. This concentration is specially designed to meet the needs of those who feel called to serve as a lead pastor or in another pastoral ministry position in a local church setting. Church leaders and elders who serve in a variety of leadership roles will also find benefit in this program and become better prepared to equip others for ministry.

One of the crying needs in our country today is for healthy and growing local churches that equip believers to love God and others by living missionally, thinking globally, and worshipping whole-heartedly. A healthy local church is a blessing to any community and the individuals and families living in it. Students in the MAPM program will learn how to lead a congregation to greater health and growth, helping them to foster positive change, shepherd God's flock while equipping others for ministry, build bridges effectively to the community and world, and serve others faithfully while maintaining their spiritual vitality.

Each of the MAPM courses, including the common Core Requirements and the unique Concentration Courses, are 100% online. The classes that comprise the MAPM concentration include:

MAPM512: The Personal Life of the Pastor	3 hrs.
MAPM522: Preaching and Worship	3 hrs.
MAPM532: Pastoral Care and Counseling	3 hrs.
MAPM542: Church Leadership and Administration	3 hrs.

Subtotal: 12 hrs.

For additional information, contact Dr. David M. Mabry, Dean of the School of Graduate Studies, at david.mabry@barclaycollege.edu or call 800-862-0226.

Spiritual Formation

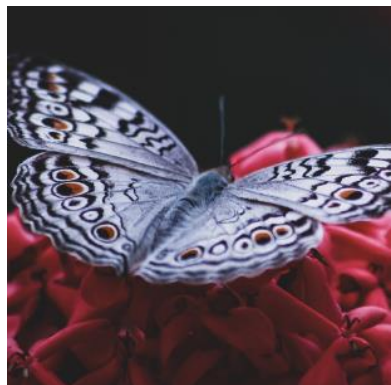
The Master of Arts in Spiritual Formation (MASF) recognizes that fulfillment in life and effectiveness in ministry increase as a person is shaped and conformed into the image of Christ. With its integration of Christian theology, Christian spirituality, and Christian community, the MASF concentration offers students a unique learning experience and opportunity to grow intellectually, spiritually, and holistically. Any church leader and follower of Christ will be stirred, challenged, and find personal benefit in this program.

The predominantly Friends faculty and the ethos of the college founded by Friends, add to the distinctive character of this concentration. The MA in Spiritual Formation is designed to maximize the learning experience for adult students by integrating the best of all possible learning environments – the convenience of flexible, distance education mixed with personal interaction and the development of genuine community and supportive relationships with fellow MASF students, faculty, and staff.

The MASF courses offer the greatest variety of distance learning methodologies. The common Core Requirements are 100% online, and the unique Concentration Courses offer video conference technologies. The courses that comprise the MASF concentration include:

MASF512: Spiritual Formation in Biblical Perspective	3 hrs.
MASF522: Spiritual Formation and the Transformational Journey	3 hrs.
MASF532: Christian Classics: Ancient Wisdom for Modern Work	3 hrs.
MASF542: Soul Shepherding: The Role of the Christian Leader	3 hrs.

Subtotal: 12 Credit Hours



For additional information, contact Dr. Clifford Winters, Director of the Masters in Spiritual Formation, at clifford.winters@barclaycollege.edu or call 800-862-0226.

Transformational Leadership

The Master of Arts in Transformational Leadership (MATL) integrates the best scholarly research and literature on leadership with a firm Biblical and theological foundation for effectiveness. This interdisciplinary emphasis is anchored in applying transformational leadership theory and Christian theology to prepare men and women for leadership and service in a variety of settings. It is an ideal emphasis for anyone who works with people in any position of ministry, leadership, service, or profession, including corporate, government, non-profit, faith-based, and community organizations.

MATL students will learn to view leadership and organizations through the lenses of both theory and faith. They will be able to analyze, construct, reconstruct, and implement principles of effective leadership to establish productive and enduring organizations. This concentration challenges students to develop relational skills that will inspire others in the workplace to take action and bring about positive change, equipping them to become the leaders that others will want to follow.

Each MATL course, including the common Core Requirements and the unique Concentration Courses, is 100% online. The classes that comprise the MATL concentration include:

MATL512: Introduction to Transformational Leadership Theory	3 hrs.
MATL522: Theological Perspectives on Transformational Leadership	3 hrs.
MATL532: Transformational Leadership and Organizational Health	3 hrs.
MATL542: Forging a Leadership Foundation: The Heart of a Leader	3 hrs.

Subtotal: 12 Credit Hours

For additional information, contact Dr. Lisa Christensen, Director of Transformational Leadership, at lisa.christensen@barclaycollege.edu.

Quaker Studies

The Master of Arts in Quaker Studies (MAQS) offers a rich examination of the Quaker (Friends) movement from an evangelical perspective, including its unique history, deep convictions, distinctive practices, and a sense of purpose. This concentration is for church leaders, professionals, and anyone who would like to discover more about the Friends Church and its place in our world today.

Others have long recognized the Friends Church for contributing to the society that far outweighs its size. MAQS students will discover why and how Friends have achieved this distinction in the past, with a conviction that the Lord still has more for Friends to accomplish in this world for His glory and the good of others!

Each MAQS course, including the common Core Requirements and the unique Concentration Courses, is 100% online. The classes that comprise the MAQS concentration include:

MAQS512: Friends History: Birth, Growth, and Organization	3 hrs.
MAQS522: Evangelical Friends Beliefs	3 hrs.
MAQS532: Quaker Classics	3 hrs.
MAQS542: Friends Missions	3 hrs.

Subtotal: 12 Credit Hours

For additional information, contact Dr. David M. Mabry, Dean of the School of Graduate Studies, at david.mabry@barclaycollege.edu or call 800-862-0226.

Family Ministries

The Master of Arts in Family Ministries (MAFM) combines Biblical theology and a practical understanding of families with a strong emphasis on personal growth and reflection.

Both good and bad, families are in the business of reproducing themselves. Many individuals recognize the brokenness passed down through their families and yet feel helpless to remedy that pain. Even healthy families have their challenges, but God's promise is that individuals and families can endure, strengthen each other, and achieve the health and longevity that we all believe a family should experience.

Three focal points for students in this Family Ministries concentration include:

- Committing to Personal Reflection and Processing
- Learning Solid Biblical Theology Concerning the Family
- Understanding Personal Goals, Calling, and Vision.

Join us as we work together to move beyond the facades and pretenses of our culture and explore how personal health leads to the healthy relationships we seek with our spouses, children, and others in our lives.

Each MAFM course, including the common Core Requirements and the unique Concentration Courses, is 100% online. The classes that comprise the MAFM concentration include:

MAFM512: Ministry of Self	3 hrs.
MAFM522: Ministry of Marriage	3 hrs.
MAFM532: Ministry of Family	3 hrs.
MAFM542: Ministry of Community	3 hrs.

Subtotal: 12 Credit Hours

For additional information, contact Dr. David M. Mabry, Dean of the School of Graduate Studies, at david.mabry@barclaycollege.edu or call 800-862-0226.

Missional Multiplication

The Master of Arts in Missional Multiplication (MAMM) prepares men and women to serve the Lord in a variety of ministry settings, both globally and locally. Those considering the call of God to serve as cross-cultural missionaries, church planters, pastors, or parachurch leaders will significantly benefit from this concentration of study.

Although not everyone will relocate to a foreign land, the "world" has come to virtually every community through technology, if not immigration. Every believer is called to live missionally and be "on mission" with God wherever He may lead. One of the most effective means of reaching people for Christ and helping them to grow is through the planting of gathered communities of believers. This emphasis will prepare leaders to shed a maintenance-mentality and contribute to a church multiplication movement. With an increased awareness of global concerns and a desire to connect with people from every cultural group, the need for contextualization and cross-cultural understanding is relevant to most (if not all) vocations.

The MAMM concentration will enable students to better understand the challenges and opportunities around us and equip them with the Biblical, theological, and missiological perspectives and tools they need to build effective bridges and make a difference in the world for Christ.

Each of the MAMM courses, including the common Core Requirements and the unique Concentration Courses, are 100% online. The classes that comprise the MAMM concentration include:

MAMM512: Church Multiplication	3 hrs.
MAMM522: Cross-cultural Ministry in Local Perspective	3 hrs.
MAMM532: Cross-cultural Ministry in Global Perspective	3 hrs.
MAMM542: Friends Missions	3 hrs.

Subtotal: 12 Credit Hours

For additional information, contact Dr. David M. Mabry, Dean of the School of Graduate Studies at david.mabry@barclaycollege.edu or call 800-862-0226.

Practical Theology

The Master of Arts in Practical Theology (MAPT) offers a personalized interdisciplinary learning experience that prepares students for effective leadership and scholarship in both ministry and non-ministry contexts. The concentration draws its courses from the other concentrations offered in the MA program, allowing students to tailor their degree to fit their professional needs and goals.

The increasingly complex world of the 21st-century requires well-rounded ministers and leaders with a wide range of skill sets and expertise. Students in the Master of Arts in Practical Theology will shape a plan of study that matches their unique circumstances, giving them the expertise necessary to impact individuals, families, churches, and communities for the glory of God.

Concentration Requirements

Master of Arts in Practical Theology (18 credit hours)

The student will craft a personalized plan of study and articulate a rationale which aligns the courses chosen with their personal and professional goals. Each concentration offers four classes that students can choose from to fill the electives requirement.

For additional information, contact Dr. David M. Mabry, Dean of the School of Graduate Studies, at david.mabry@barclaycollege.edu or call 800-862-0226.

Biblical Translation

The Master of Arts in Biblical Translation (MABT) is designed to train people in the MAST methodology of biblical translation. MAST (Mobile Assistance Supporting Translation) is a methodology enabling the church to quickly learn, implement and own the translation process. The method allows native language speakers to participate in both written and oral translations bringing together churches and communities to quickly have access to God's word in their heart language. The MABT concentration will enable students to not only utilize the MAST method in practical applications, but also teach and train the methodology to others.

In coordination with the Barclay College Institute of Biblical Translation and the School of Graduate Studies is that some graduates of the MABT will have the opportunity to be utilized to teach biblical translation at international seminaries and schools worldwide. Further, the partnerships available within this degree include a host of global institutions and missional organizations that collaborate in partnership and offer internship opportunities. As well as practical experience, the research done within the MABT program will be real, relevant, and impacting.

In addition to the concentration courses, the MABT also includes a practicum that involves the practical application and experience of biblical translation by the student. The classes that comprise the MABT concentration include:

MABT512: Oral, Sign Language, & Special Needs Translation	3 hrs.
MABT522: History of Biblical Translation and the Reformation	3 hrs.
MABT532: MAST Methodology	3 hrs.
MABT542: Translation Tools and Technology	3 hrs.

Subtotal: 12 Credit Hours

For additional information, contact Daniel Kramer, Dean of the Institute for Biblical Translation, at daniel.kramer@barclaycollege.edu or call 800-862-0226.

Course Descriptions

CORE REQUIREMENTS

MAO501: Orientation (0)

This is a self-guided course designed to introduce students to the CANVAS structure that all Graduate courses run through and provides a chance to interact with the mechanics of the online portal and discussion forum and the academic rigors of graduate studies. This course is open for 30 days before the first day of class. It is available at the student's convenience and must be completed the Friday before the first day of class.

BIBLE AND THEOLOGY

MABI511: Old Testament Hermeneutics (3)

God's revelation through the Old Testament illuminates His timely message and timeless story for His people while also providing the context and foundation for the New Testament. In this class, students will investigate the richness of the Old Testament and its relevance for today, including the principles and procedures for its interpretation, application, and exposition.

MABI521: New Testament Hermeneutics (3)

The narrative of Christ and His Church, foreshadowed in the Old Testament and revealed in the New Testament, provides the framework for Christian faith and practice. This class in Biblical interpretation and exegesis focuses on the life and teachings of Christ, the experience of believers, and the eternal hope of the Church as recorded in the gospels, epistles, and apocalyptic literature.

BIBLICAL TRANSLATION

MABT512: Oral, Sign Language and Special Needs Translation (3)

An exploration of translation efforts and methods in oral language, sign language, and special needs translation.

MABT522: The History of Biblical Translation and the Reformation (3)

An overview of the history of Bible translation as demonstrated within Scripture, the canonization of different approaches, philosophies of translation and ownership with the church, as well as the modern translation methodologies movement.

MABT532: MAST Methodology (3)

An overview of MAST (Mobilized Assistance Supporting Translation) methodology, the global impact, the theory behind it, and the variations of approach that promote Church ownership in biblical translation.

MABT542: Translation Tools and Technology (3)

This course will provide in-depth training and education over contemporary translation tools and technology. An exploration of historical tools will also occur.

FAMILY MINISTRIES

MAFM512: Ministry of Self (3)

This class will examine the personal life of the minister and the motives and beliefs that drive each individual's decisions, relationships, and personal goals. Becoming healthy in our own life is necessary if an individual hopes to help others find health in their life, relationships and ministry. Emphasis is given to personal responsibility and respectful boundaries among those we love and serve.

MAFM522: Ministry of Marriage (3)

This class explores the dynamics of marriage and the necessary balance with the demands of life, including family, ministry, vocation, avocation, and calling. The individual's responsibility as a husband or wife is viewed through the respectful and supportive interplay of health and growth for ourselves and our spouse.

MAFM532: Ministry of Family (3)

This class examines the circle of family dynamics through the lens of family systems theory. Beginning with the nuclear family, healthy relationships are analyzed with an eye to the larger extended family, family themes, family myths, cultural and ethnic influences, and a host of other dynamics that shape the family unit.

MAFM542: Ministry of Community (3)

This class begins to shape the student's belief about the intersection of individual and family health and sustainable culture of ministry to families that bring change and healing. Ministry models are examined with an emphasis on the individual health of the minister while, at the same time, enabling families to heal and grow.

MISSIONAL MULTIPLICATION

MAMM512: Church Multiplication (3)

The Great Commission uttered by Jesus urges believers to "go and make disciples of all nations." One of the most effective forms of evangelism and making disciples involves planting new gatherings of believers. This class examines the biblical foundations, effective methodologies, best practices, and reproducible plans for church multiplication that can extend globally to people in any cultural context. Special attention is given to understanding the diversity of roles and leadership needed to plant churches, the importance of individual coaching, and the value of finding the best fit for an individual to flourish in church multiplication activities.

MAMM513: The Missional Church (3)

We may not all be called to serve Christ as missionaries in a foreign land, but we are all called to be "on mission with God" wherever he may lead us. In this course, students are challenged to examine their purpose and calling in life, maximize their capacity to build bridges, and bear faithful witness to the Gospel of Jesus Christ both at home and around the world.

MAMM522: Cross-Cultural Ministry in Local Perspectives (3)

This is a study of the principles, goals, and strategies related to current practice in international ministries within the United States, with transferable concepts relative to cross-cultural ministries in any region. The course will introduce students to the complex issues related to the interdisciplinary process of entering a culture other than their own within the United States with the purpose of initiating an effective ministry. Students will study transcultural issues and examine their commitment and preparation to make contextual adjustments required to accurately and effectively communicate biblical truth in culturally sensitive ways.

MAMM532: Cross-Cultural Ministry in Global Perspectives (3)

Recognizing that effective leadership requires strenuous contextualization, this course explores the missiological implications of serving Christ in an increasingly diverse, complex, and interdependent world. Students will be challenged to think globally and act locally as they seek to fulfill Jesus' Great Commission.

MAMM542: Quaker Missions (3)

God has not called Quakers to reach everyone in the world for Christ by themselves, but there is a portion of the Great Commission for which they will be held accountable. This course investigates the advent and worldwide spread of Friends through humanitarian aid, the proclamation of the gospel, the planting of churches, and the rise of cross-cultural missions efforts. Special attention has been given to the engagement of Friends in world missions over the past 150 years.

PASTORAL MINISTRY

MAPM512: The Personal Life of the Pastor (3)

A study in the care of the pastor's personal life, recognizing the need for personal spiritual health and Christ-like formation for effectiveness in ministry. Topics such as spiritual disciplines, character development, time management, marriage and family, and finances will be addressed.

MAPM522: Preaching and Worship (3)

A study of the craft of sermon preparation and the delivery of Biblical and relevant messages within the context of a corporate gathering for worship. Other aspects of effective worship services will also be explored.

MAPM532: Pastoral Care and Counseling (3)

This course will prepare men and women for effective shepherding, pastoral care, and counseling within the context of a local church body. Topics will be covered: family, marital, individual, premarital, crisis, and grief counseling; life-stage care (weddings and funerals); baptism and communion; hospital and shut-in visitation; and support group models for healing and corporate health.

MAPM542: Church Leadership and Administration (3)

Churches need effective leadership to experience vitality and growth. This study equips men and women for effective leadership and administrative roles in a local church setting, covering important topics every pastor needs to know, such as: working with a team, conflict management, recruiting and equipping others for ministry, creating and casting a compelling vision, leading through change, church finances, and fundraising, and church governance.

PRACTICAL THEOLOGY

MAPT555: MAPT Concentration Electives (18)

The student will craft a personalized plan of study and articulate a rationale that aligns the courses chosen with their personal and professional goals. Courses are selected from the 28 concentration courses in FM, PM, SO, MO, TL, SF, QS.

QUAKER STUDIES

MAQS512: Quaker History (3)

This course provides a survey of the Friends Church from its origins in the 17th century to the present. Friends history is examined with its distinctive practices, reform efforts, church polity, and the ongoing cultural relativism and relevancy challenges. The worldwide movement of Quakers is studied.

MAQS522: Quaker Beliefs (3)

Friends affirm the unity of the true Christian Church while also recognizing the theological contribution that each corporate body makes to the whole. This course examines the essential truths of the Christian faith held in common by Christ-centered Friends while also exploring the background and biblical basis of several distinctive Quaker perspectives.

MAQS532: Quaker Classics (3)

This course provides a study of classical literature by prominent Friends leaders, tracing a Christ-centered theme throughout the story of Quakerism. Students will learn from the writing of authors such as George Fox, Robert Barclay, and Joseph John Gurney, applying historic Quaker insights to life and ministry today.

MAQS542: Quaker Missions (3)

God has not called Quakers to reach everyone in the world for Christ by themselves, but there is a portion of the Great Commission for which they will be held accountable. This course investigates the advent and worldwide spread of Friends through humanitarian aid, the proclamation of the gospel, the planting of churches, and the rise of cross-cultural missions. Special attention has been given to the engagement of Friends in world missions over the past 150 years.

RESEARCH AND APPLICATION

MARA532: Research Methods (3)

This course introduces the research methods applicable in a variety of academic and organizational settings, including both quantitative and qualitative strategies that are commonly used in a graduate Capstone project.

MARA533: Applied Research 1 (3)

In this research and application course, students will identify and begin to investigate a potential Capstone project that relates to their chosen concentration of graduate studies. Through practical examination, each student will focus on their field of study using a variety of potential methods, some of which may include: field experience, literature review, and other forms of data collection.

MARA543: Applied Research II: Capstone Project (3)

This course involves completing a written Capstone project that serves as the culmination of a student's research and graduate school experience. Students will integrate their research findings with their chosen area of concentration, applying them to life, service, or leadership today. In addition, each student will demonstrate their acquisition of scholarship, critical thinking, creativity, and written communication skills.

SPIRITUAL FORMATION

MASF512: Spiritual Formation in Biblical Perspective (3)

A study of the Old Testament and New Testament that explores significant biblical events (movements) and the spiritual formation of exceptional biblical personalities (models), and their life-transforming experiences (moments), in light of Jesus' transforming leadership and His life, death, and resurrection.

MASF522: Spiritual Formation and the Transformational Journey (3)

Leaders must be transformed in order to be transforming. This course allows students to engage in an intentional process of self-examination and self-discovery as a means of cultivating a deeper awareness of God's soul-shaping activity and greater receptivity to Christ's ongoing work in their lives.

MASF532: Christian Classics: Ancient Wisdom for Modern Work (3)

This course exposes students to the rich treasury of devotional literature that is available to encourage us along the way in our journey with Christ. It also offers an opportunity to gain fresh insight and inspiration from a wide range of Christian leaders whose lives often bear a striking resemblance to our own.

MASF542: Soul Shepherding: The Role of the Christian Leader (3)

This course equips students with the theological framework and practical skills required to become faithful soul shepherds or spiritual directors, helping others to model their lives in the image and likeness of Jesus Christ. Students will learn strategies and formulate plans for soul care, spiritual direction, leadership coaching, and corporate discernment that can be applied to individuals, groups, and congregations.

THEOLOGY

MATH531: Christian Theology (3)

This class investigates the essential teachings of the evangelical Christian faith, with special attention given to the person and work of Christ, sin and salvation, the role of the Holy Spirit, the life of the Church, and contemporary theological issues. Students will become better equipped to apply and articulate theological convictions in ministry settings.

MATH541: The History of Christianity (3)

This course addresses the major events, issues, personalities, and movements that shape and define the story of the Christian Church. Topics such as the birth and growth of the Early Church, the threat of persecution, the rise of monasticism, the Councils of Nicea and Chalcedon, the Reformation, the Great Awakenings, ecumenical efforts, and the globalization of the gospel provide a deeper understanding of the Church and a relevant perspective for ministry today.

TRANSFORMATIONAL LEADERSHIP

MATL512: Transformational Leadership Theory (3)

In this class, students are introduced to the field of transformational leadership theory. Attention is given to the history of transformational leadership theory, noting the key personalities who contributed to the theory, the main characteristics of the theory, and the common application of the theory used in both religious and secular institutions and organizations since the 1970s. Students also explore the need to revitalize leadership for effective Christian life service and leadership in the twenty-first century.

MATL522: Theological Perspectives on Transformational Leadership (3)

This course provides a survey of theological perspectives of leadership, including a variety of biblical case studies, Christo-centric models of leadership, and an investigation of the leader as a Christian steward. In addition, students utilize the lens of transformational leadership theory for deeper analysis and evaluation of biblical perspectives. Special attention is given to the application of academic insights to life and ministry in a variety of leadership settings, both within and outside of the organized church.

MATL532: Transformational Leadership & Organizational Health (3)

This course investigates the main concepts and components of transformational leadership theory as applied to organizations. Students explore TLT relative to transformational organizations and their professional calling and setting, yet emphasizing current organizational research and theory. In addition, contemporary leadership theories, models, and critiques are examined to give each student an understanding of the broader field of leadership studies.

MATL552: Professional Application of Transformational Leadership Theory (3)

An examination of supportive models and operational strategies needed to infuse transformational leadership theory into followers and organizations. The focus will be given to the strategy of infusing the specific elements of transformational leadership theory necessary for cultural transformation. In addition, students will explore how to infuse excellence, collaboration, conscious awareness, consequences, needs assessment, follower-empowerment through situational context, and shared decision-making into followers and organizations.

Graduate School Administration

David Marine Mabry, DMin Dean of the School of Graduate Studies
 Aaron Stokes, MA Registrar
 Tiffany DiBlasi Director of Graduate Admissions

GRADUATE CONCENTRATION DIRECTORS

David M. Mabry, DMin Director, MA in Practical Theology; Family Ministries
 Lisa Christensen, PhD Director, MA in Transformational Leadership
 Daniel Kramer, MA Director, MA in Biblical Translation
 Clifford Winters, PhD Director, MA in Spiritual Formation

GRADUATE SCHOOL FACULTY

Paul Anderson (2016), Professor of Biblical and Quaker Studies, George Fox University, Newberg, OR.
 MDiv, Earlham School of Religion;
 PhD, Glasgow University

Bruce Bell (2019), Professor of Pastoral Ministry.
 MA, Christian Ministries (Wheaton College) 1980

David Byrne (2018), Executive Director, Coalition for Hispanic Ministries.
 BA, Mt. Vernon Nazarene College; MDiv, Asbury Theological Seminary;
 DMin, Houston Graduate School of Theology

Lisa Christensen (2021), Director of Transformational Leadership; Professor Research Methods. \
 MA, Barclay College;
 PhD, Johnson University

Manny Garcia (2022), Professor of Spiritual Formation.
 MA, Pastoral Ministry; Barclay College.

Folashade Oloyede (2021), Professor of Nigerian Baptist Theological Seminary, Ogbomosho; Professor
 of Biblical Translation.
 Doctor of Philosophy (English), University of Ibadan, Ibadan, Nigeria

Paul A. Hoffman (2019), Lead Pastor Evangelical Friend Church of Newport, RI; Professor.
 MDiv, Gordon-Conwell Theological Seminary;
 PhD, University of Manchester.

John Knox (2022), Associate Professor of Psychology of Rawlins School of Divinity Liberty University, Lynchburg, VA. Professor of Theology and Church History.
PhD in Theology & Religion, University of Birmingham (UK), 2009.

Daniel Kramer (2020), Associate Vice President, Strategic Partnerships and Initiatives; Professor.
MA-Education (1998);
PhD (ABD) Curriculum and Instruction

David Marine Mabry (2015), Dean of the School of Graduate Studies
BA, Malone College; MA and DMin, Ashland Theological Seminary

Steven Mann (2013), Instructor at Azusa Pacific University, Westmont College, and Barclay College.
BA, Azusa Pacific University; MDiv, Azusa Pacific University;
Ph.D., Fuller Theological Seminary

David Mercadante (2022), Leadership Development Director, Evangelical Friends Church-Eastern Region.
BA, High Point University; MA, Wake Forest University Divinity School;
DMin, Gordon-Conwell Theological Seminary.

Emmanuel Oyemomi (2022), Professor of Nigerian Baptist Theological Seminary, Ogbomosho; Professor of Biblical Translation.

Jim Le Shana (2012), Superintendent, Northwest Yearly Meeting of Friends Church; Professor.
BA, George Fox University;
MA, Fuller Theological Seminary; MDiv, Azusa Pacific University; MA and PhD, University of California, Riverside

David Williams (2011), Director of Evangelical Friends Church International; Professor.
DMin, in leadership and spiritual formation at George Fox University

Clifford T. Winters (2019), Teaching Pastor, New England Chapel. Professor, Bible, Theology, Practical Ministry.
BA, Virginia Commonwealth University; MDiv, Gordon-Conwell Theological Seminary; PhD, Asbury Theological Seminary.

DIRECTORY INFORMATION

Barclay College

www.barclaycollege.edu

607 N. Kingman
Haviland, KS 67059

800.862.0226

General Information Email: distancelearning@barclaycollege.edu

Admissions Office Email: graduatestudies@barclaycollege.edu

Financial Aid Email: financialaid@barclaycollege.edu

Registrar's Office Email: registrar@barclaycollege.edu

Learning Management System: barclaycollege.instructure.com/

Barclay College Board of Trustees

DeWayne Bryan	Haviland, Kansas
Pat Byers	Wabash, Indiana
Richard Carlson	Rock Springs, Wyoming
Mike Christensen	Grandview, Missouri
Linda Clarkson	Pratt, Kansas
Keith Custer	
Caleb Davis	Overland Park, Kansas
Steve Davis	Haviland, Kansas
Dr. Jim Day	
Dr. Manny Garcia	Wichita, Kansas
Dave Hickman	Wichita, Kansas
Sheila Hinshaw	Saddlebrooke, Missouri
Gail Hinshaw	
Chay Howard	Haviland, Kansas
Sharon Howard	Haviland, Kansas
Trent Jacks	Haviland, Kansas
Dale Johnson	
Mark Reich	Beloit, Ohio
Terry Semones	
Tom Showalter	
Rune Skipp	
Dr. Steve Slack	
Marion Spatz	Haysville, Kansas
Stan Stark	Pratt, Kansas
Carolyn Taylor	Haviland, Kansas
Dr. Thayne Thompson	Haviland, Kansas
Dr. Roger Thomas	
Keith Whitney	Fowler, Kansas
Bill Wells	
Elisha Wisener	Colorado Springs, Colorado

Administration and Staff

President's Office and Cabinet

Royce Frazier, M.E., Ph.D., President
Lee Anders, M.B.A., Vice President for Business and Support Services
Derek Brown, Ph.D., Vice President for Academic Services
Ryan Haase, M.A., Vice President for Student Services
Adrian Halverstadt, Ph.D., Chancellor
Mark Miller, M.M., Vice President for Institutional Advancement
Brockie Follette, M.A., Campus Chaplain

Academic Services

Derek Brown, Ph.D., Vice President of Academic Services
Dan Kramer, Ed.S. Associate Vice President for Strategic Partnerships and Initiatives
David M. Mabry, D.Min., Dean of the School of Graduate Studies
Aaron Stokes, M.A., Registrar
Angie Wetmore, M.S., Dean of the School of Distance Education

Student Services

Tiffany DiBlasi, Director of Graduate Admissions
Ryan Haase, M.A., Vice President for Student Services
Justin Kendall, B.S., Director of Admissions
Kevin Lee, M.A., Director of Online Recruiting

Business Services

Lee Anders M.B.A., Vice President for Business and Support Services
In lieu of, contact Tiffany DiBlasi, Director of Financial Aid
Elaina Halverstadt, B.S., Account Receivable- Online
In lieu of, contact Tiffany DiBlasi., Accounts Receivable Specialist
Gayle Mortimer, B.S., Accounts Payable, Human Resources

Academic Calendar 2023-2024

Fall 2023

July 10- August 11: Orientation

August 14 - September 24: Session 1

- MABT512 - Oral, Sign Language and Special Needs Translation
- MAFM512 - Ministry of Self
- MAMM512 - Church Multiplication
- MAPM512 - The Personal Life of the Pastor
- MAQS512 - Quaker History: Birth, Growth, & Organization
- MASF512 - Spiritual Formation in Biblical Perspective
- MATL512 - Transformational Leadership Theory
- MASO513 - Foundation of Sports Ministry

September 25- October 1: Fall Break

October 2 - November 12: Session 2

- MABI511 - Old Testament Hermeneutics
- MATH531 - Christian Theology

November 13 - December 17: Session 3

- MARA523 - Research Methods

Spring 2024

December 11 - January 5 Orientation

January 5 - February 18: Session 1

- MABT522 - The History of Biblical Translation and the Reformation
- MAFM522 - Ministry of Marriage
- MAMM522 - Cross Cultural Ministry in Local Perspective
- MAPM522 - Preaching and Worship
- MAQS522 - Quaker Beliefs
- MASF522 - Spiritual Formation and the Transformational Journey
- MATL522- Theological Perspectives on Transformational Leadership
- MASO523 - Methods and Models of Sports Ministry

February 19 - March 31: Session 2

- MABI521 - New Testament Hermeneutics
- MATH541 - The History of Christianity

April 1 - May 12: Session 3

- MARA533 - Applied Research I
- MAMM513 - Missional Church

May 5: Graduation